

Scots-built sports car joins the big names

WITH just one week to go to the opening of the Scottish Motor Show, staff at Scotland's only car manufacturer are working flat out to prepare their latest model for display alongside some of the most exotic cars in the show, including Roll-Royce and Lamborghini. writes Jim Dunn.

The Haldane Mark II is a handbuilt, 120-mph sports car based on the classic Austin Healey 100/4, but features a new chassis designed and built in Scotland and powered from one of the most modern two-litre, multi-valve engines on the market.

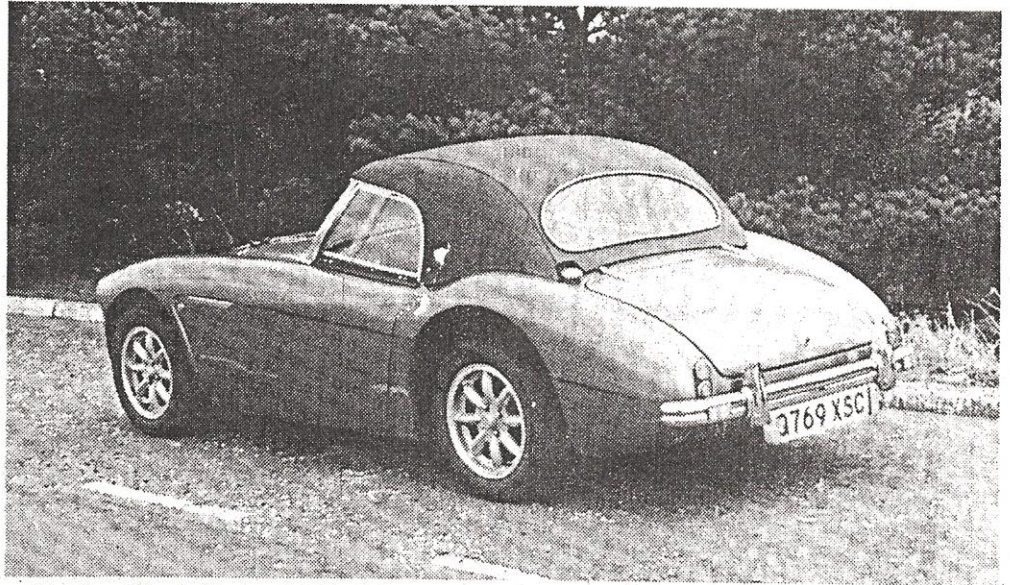
The Blantyre company, which was founded by former wind-power engineers Brian Harrison and Alasdair Scott, started building kit cars based on the classic Austin Healey three years ago.

Now the company plans to launch its Mark II as a complete car ready to drive and already there have been export inquiries from as far away as Australia and the United States.

"We have already supplied over 40 examples of the Mark I," said Harrison, "but we believe there will be an even greater demand for the Mark II, which is designed to meet forthcoming EC safety legislation and which we hope will be exported all over the world."

Though the company's products are well known to enthusiasts, the Scottish Motor Show will effectively mark the launch of the new car to the public and the staff at Haldane have stripped the factory demonstrator to its component parts so that it can be repainted for the show.

"The GRP bodies, which are built in Leven, are already



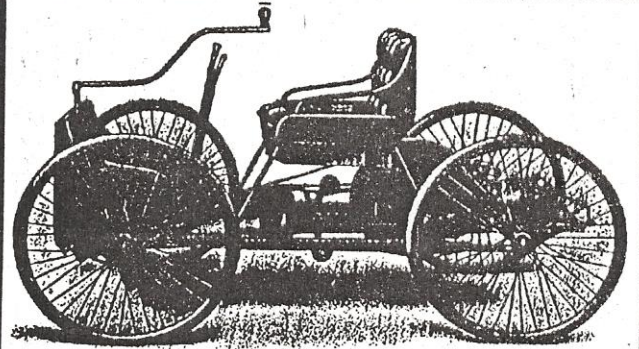
Haldane Mark II: Austin Healey-based, with new chassis and powerful modern engine

self-coloured to a very high standard," said Harrison, "but for the very best paintwork you really need to use gloss paint, and I am sure that the car will look absolutely stunning in light metallic blue when the show opens."

The car was designed, developed and built in well under a year with the help of finance from the Department of Trade and Industry. A computer-design consultancy helped with the chassis design.

As well as boasting two-miles-a-minute capability, the catalyst-equipped Haldane Mark II can accelerate from standstill to 60 mph in 6.5 seconds.

But it is also, Brian Harrison insists, a car for everyday use. "The Sierra drive train uses the latest engine management technology, is brand new and and there is even a works replica hardtop for winter use."



The Scottish Motor Show
8 - 17 November
on 8th November

THE SCOTSMAN
will publish a special unrivalled